



## SYSTEM BENEFITS

- Improve overall aircraft, weather and airport situational awareness through a single, rotatable 3D graphical display
- Dispatch, monitor and reroute flights to achieve optimal fuel economy and on-time performance
- Improve operational efficiency with better planning to maximize personnel and facility resources
- Utilize real-time and predictive tools and data to anticipate airport delays and make necessary operational adjustments
- Visually depict the planned route of flight in relation to predicted weather and anticipated air traffic and make necessary route adjustments
- Capture valuable flight and airport information for ground logistics management
- Utilize airport data and runway displays to plan for takeoffs and landings accurately
- Monitor airspace with event based alerts
- Utilize real-time and historical information to provide superior customer service
- Employ emergency diversion tools to locate alternate airports in the event of an emergency



[www.flightexplorer.com/au](http://www.flightexplorer.com/au)

# Flight Explorer Professional®

## Real-time Global Flight Tracking and Airspace Monitoring



Flight Explorer Professional is an integrated flight tracking and operations management decision support tool that provides members of the Australian aviation community the tools they require to improve operational efficiency and the performance of their business.

Flight Explorer goes beyond “flight tracking,” incorporating multiple data feeds, dynamic weather overlays, situational alerts, predictive weather and air traffic tools to make FE Professional an essential flight operations management system.

Whether you run a major, regional, or commuter airline; a global air express or air cargo company; a major or regional airport; an air charter service; a fixed-based operation (FBO); or an airline-related service; Flight Explorer helps your business make informed decisions on how best to manage your fleets, crew and overall flight operations.

## KEY FEATURES

**Global Data Feeds** – An extensive and expanding source of global data provides real-time flight tracking information around the world via Airservices Australia’s radar data feed, the United States FAA’s ASDI feed for IFR traffic, Airways New Zealand IFR traffic, international radar feeds, Honeywell GDC data-link, ARINC Direct datalink, ACARS, SITA, and satellite/GPS tracking.

**Extensive Weather Options** – Display and animate Australia Bureau of Meteorology (BOM) weather, North American NEXRAD weather, worldwide IR satellite coverage, international graphical METARs, and add other dynamic weather including SIGMETS, Collaborative Convective Forecast (CCFP), real-time lightning, volcanic ash advisories and predictive thunderstorms, worldwide forecasts and on-site turbulence.

**Third-Party Data Integration** – Seamlessly integrate third-party data into Flight Explorer, including position tracking data for trucks, ships, cargo or people, user-specific weather, map overlays or crew information.

**Route Building, Checking and Display** – Import Company routes (including ICAO routes) and display one or more of them on Flight Explorer.

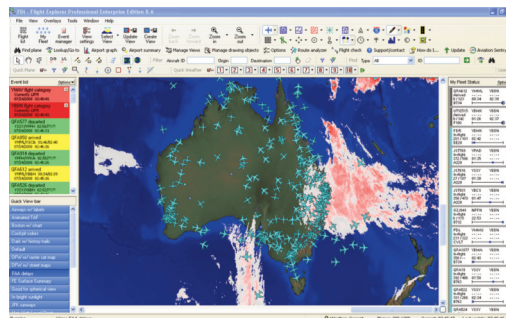
**Airport Information** – View METARs and TAFs, and U.S.-based

PIREPs, NOTAMs, Diversion and RVR data, sunrise and sunset information, D-ATIS Reports (Digital Automatic Terminal Information Service), Jeppesen’s worldwide airport database, Universal Weather and Aviation’s UVTripPlanner and the AOPA Airport Directory.

**Flight Alert™ System** – Extensive event system generates alerts via voice, e-mail, on-screen event list, PC audio or log file for aircraft events such as arrivals, departures, change in ETA, flight plan received; proximity to destination, METAR and Diversions.

### User-Selectable Graphical Overlays –

Overlay graphics including Aircraft, Weather, Airports, Worldwide Cities, Highways, Terrain, NAVAIDs, Fixes, Centers (U.S. only), Sectors, *continued*



*With the MyFleet and Airport Alerts users can receive multiple alerts on changing aircraft, airspace and airport conditions*

# Flight Explorer Professional®



*continued*

Worldwide Airways, SUAs, Radar sites, Lat/long, U.S. TRACONS and Time Zones on top of the base map.

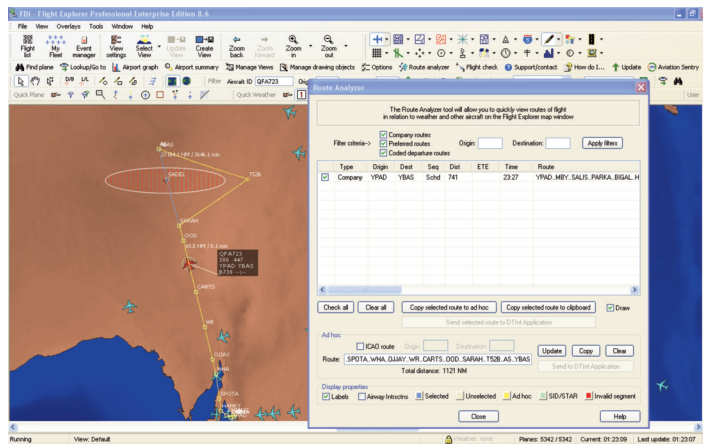
**Map and Background Image Overlays** – Overlay any raster-based, geo-referenced background images such as FAA charts, aviation maps and satellite imagery. Complete Australian, U.S. and Canadian street level maps from NAVTEQ are also available.

**Online Reporting Tool** – Create custom reports and query airport and aircraft ID data for previous months.

**JETNET Aircraft Owner and Operator Data** – JETNET provides up-to-date aircraft owner, operator and key contact persons information for almost 30,000 jet and turboprop aircraft worldwide. JETNET's data is now fully integrated into the Flight Explorer Professional Online Reporting Tool (ORT), enabling users to view the aircraft information on the Flight Explorer ASD as well as export the data into Microsoft Excel for additional reporting and marketing analysis.

**Event Log and Reporting System** – View a real-time log of all significant events occurring during a flight or at an airport, and export them into a database for analysis. Customized events can also be defined.

**Multiple Map Windows** – Users can display up to four different User Defined Views simultaneously on their ASD



Users can display company routes between two city pairs along with the route flown in relation to current weather, restricted airspace and traffic

screen. Each window has full FE Professional functionality and can be changed or saved independently.

**'Last Known Location' Tracking** – See the last known arrival information for any flight tracked by Flight Explorer. Always know where and when your aircraft landed, even if the aircraft has been on the ground for 24 hours!

**My Fleet™ Status List** – View a real-time status of your fleet from the time the flight plan is filed to arrival at the destination airport

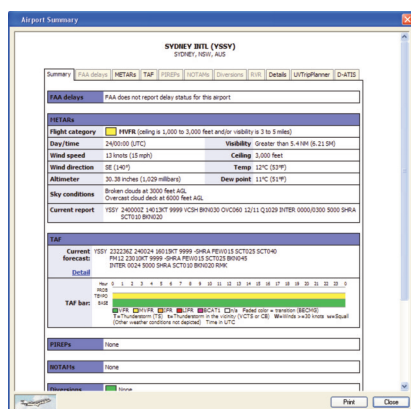
and beyond. View your fleet by departure time and/or ETA.

**Drawing Tools** – Draw custom objects on the Flight Explorer screen. Enable floor and ceiling altitudes to generate alerts when aircraft or flight plans enter or leave the area. Set up these objects with a direction and speed to "box" concerns such as weather fronts or turbulence.

**Record/Playback Function** – Record the entire Australia Airspace activity and weather for training and resource deployment evaluations.

**ESRI Shape File Support** – Import industry standard vector image files (or create your own) to display geographical or company specific points of interests such as hospitals, volcanoes, regions and more.

**World Class Technical Support** – 24/7 telephone and online support by responsive and knowledgeable professionals.



With the Airport Summary features users can view METARs, TAFs, PIREPs, D-ATIS, UVTripPlanner and more to better anticipate and plan for airport conditions diversions and delays.

## CUSTOMER PROFILE

- Numerous international airlines, including British Airways
- Top five worldwide cargo carriers: FedEx, UPS, Airborne Express, TNT and DHL
- 12 largest executive jet operators, including NetJets, Flight Options and Bombardier FlexJet
- 85 percent of North American major and regional airlines, including Northwest, Jet Blue, American, Southwest, US Airways, Air Tran Airways and Frontier
- 85 percent of the FAA's Collaborative Decision Making (CDM) participants
- Major airports, including Atlanta Hartsfield, Chicago O'Hare, New York Port Authority and Miami
- Members of the U.S. Department of Defense's Civil Reserve Air Fleet (CRAF)
- 80 percent of the Air Transport Association (ATA) membership
- More than 200 corporate flight departments, air charter operators and FBOs

## FLIGHT EXPLORER APPLICATION PROGRAMMING INTERFACES (API'S)

- **Desktop Interface:** Seamlessly integrates with 3rd party systems already in your facility such as Flight Planning systems
- **FLEX:** Provides an interface for 3rd parties to extend the functionality of the Flight Explorer client application by adding overlays, event handlers or triggers, screen hot spots, context properties, etc.
- **3PDI (3rd Party Data Interface):** A back end API for customers or vendors to send Flight Explorer supplemental tracking, messaging and event information for distribution to any Flight Explorer client application.

